

### Specifications

Models	S-80		S-85	
	Metric	US	Metric	US
Measurements				
Working height maximum*	26.38 m	86 ft	27.90 m	91 ft
Platform height maximum	24.38 m	80 ft	25.90 m	85 ft
Horizontal reach maximum	21.80 m	71 ft 6 in	23.32 m	76 ft 6 in
Below ground reach	1.85 m	6 ft 1 in	2.89 m	9 ft 6 in
▲ Platform length - 8 ft model	0.91 m	3 ft	0.91 m	3 ft
Platform length - 6 ft model	0.76 m	2 ft 6 in	0.76 m	2 ft 6 in
▲ Platform width - 8 ft model	2.44 m	8 ft	2.44 m	8 ft
Platform width - 6 ft model	1.83 m	6 ft	1.83 m	6 ft
▲ Height - stowed	2.80 m	9 ft 2 in	2.80 m	9 ft 2 in
▲ Length - stowed	11.13 m	36 ft 6 in	12.20 m	40 ft
Length - transport (jib tucked under)			11.60 m	38 ft
▲ Width	2.50 m	8 ft 2 in	2.50 m	8 ft 2 in
▲ Wheelbase	2.85 m	9 ft 4 in	2.85 m	9 ft 4 in
▲ Ground clearance - center	0.40 m	15.8 in	0.40 m	15.8 in

### Productivity

Lift capacity	227 kg	500 lbs	227 kg	500 lbs
Platform rotation	160°	160°	160°	160°
Vertical jib rotation			135° (+ 78° /- 57°)	
Turntable rotation	360° continuous		360° continuous	
Turntable tailswing	1.42 m	4 ft 8 in	1.42 m	4 ft 8 in
Drive speed - stowed	5.3 km/h	3.3 mph	5.3 km/h	3.3 mph
- raised/extended	1.0 km/h	0.65 mph	1.0 km/h	0.65 mph
Gradeability - 2WD - stowed**	30%	30%	30%	30%
- 4WD - stowed**	45%	45%	45%	45%
Turning radius - axle extended: inside	3.66 m	12 ft	3.66 m	12 ft
outside	6.55 m	21 ft 6 in	6.55 m	21 ft 6 in
Controls	12V DC proportional		12V DC proportional	
Tyres - RT foam filled	18-625, 16 ply		18-625, 16 ply	

### Power

Power source Deutz TD2011 L04i 4 cylinder turbo diesel 74 hp (55 kW)  
Perkins 804D-33 4 cylinder diesel 63 hp (47 kW)

Auxiliary power unit	12V DC	12V DC	12V DC	12V DC
Hydraulic tank capacity	151 L	40 gal	151 L	40 gal
Fuel tank capacity - diesel	132 L	35 gal	132 L	35 gal

### Sound & Vibration Levels

Sound pressure level (ground workstation)	83 dBA	83 dBA	83 dBA	83 dBA
Sound pressure level (platform workstation)	71 dBA	71 dBA	71 dBA	71 dBA
Vibration	<2.5 m/s <sup>2</sup>	<8 ft 2 in/s <sup>2</sup>	<2.5 m/s <sup>2</sup>	<8 ft 2 in/s <sup>2</sup>

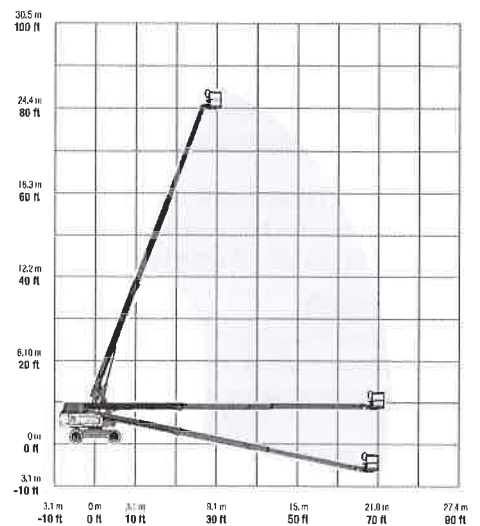
### Weight\*\*\*

2WD	16,057 kg	35,400 lbs	17,191 kg	37,900 lbs
4WD	16,103 kg	35,500 lbs	17,236 kg	38,000 lbs

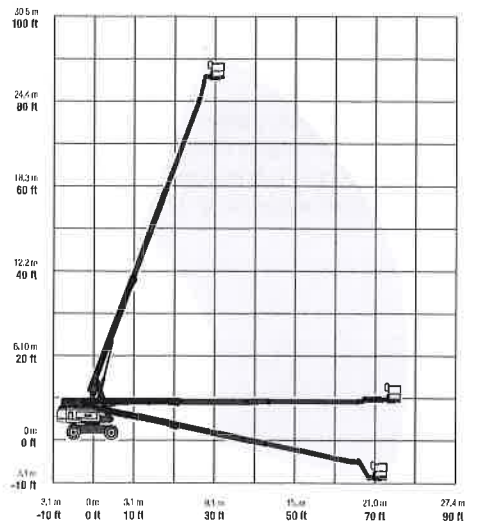
### Standards Compliance

EU Directives: 2006/42/EC - Machinery (harmonized standard EN280:2001+A2:2009); 2004/108/EC (EMC); 2000/14/EC (Outdoor Noise)

Range Of Motion S-80



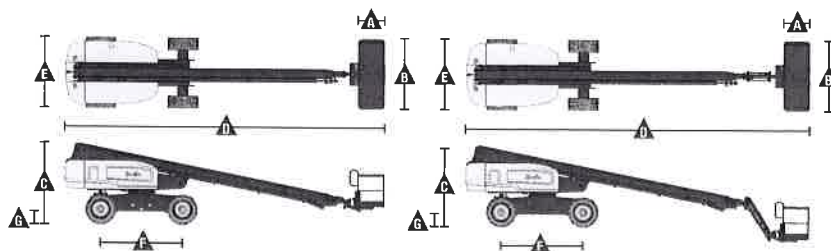
Range Of Motion S-85



\* The metric equivalent of working height adds 2 m to platform height, U.S. adds 6 ft to platform height.

\*\* Gradeability applies to driving on slopes. See operator's manual for details regarding slope ratings.

\*\*\* Weight will vary depending on options and/or country standards.



# Self-Propelled Telescopic Booms

## S™ -80 & S-85

### Features

Standard Features	Easily Configured To Meet Your Needs	Options & Accessories
<p><b>Measurements</b></p> <p><b>S-80</b></p> <ul style="list-style-type: none"> <li>• 26.38 m (86 ft) working height</li> <li>• 21.8 m (71 ft 6 in) horizontal reach</li> <li>• 227 kg (500 lbs) lift capacity</li> </ul> <p><b>S-85</b></p> <ul style="list-style-type: none"> <li>• 27.90 m (91 ft) working height</li> <li>• 23.32 m (76 ft 6 in) horizontal reach</li> <li>• 227 kg (500 lbs) lift capacity</li> </ul> <p><b>Productivity</b></p> <ul style="list-style-type: none"> <li>• Self levelling platform</li> <li>• Hydraulic platform rotation</li> <li>• Proportional joystick controls</li> <li>• Thumb rocker steering</li> <li>• Drive enable</li> <li>• AC power cord to platform</li> <li>• Tilt alarm</li> <li>• Descent &amp; travel alarms</li> <li>• Flashing beacon</li> <li>• Horn</li> <li>• Hour meter</li> <li>• 360° continuous turntable rotation</li> <li>• Positive traction drive</li> <li>• Two speed wheel motors</li> <li>• Certified load sensor</li> </ul> <p><b>Power</b></p> <ul style="list-style-type: none"> <li>• 12V DC auxiliary power</li> <li>• Anti-restart engine protection</li> <li>• Auto engine fault shutdown</li> <li>• Intake air heater (Deutz engine)</li> </ul>	<p><b>Platform Options</b></p> <ul style="list-style-type: none"> <li>• Steel 2.44 m (8 ft)</li> <li>• Steel 1.83 m (6 ft)</li> <li>• Steel 2.44 m (8 ft) tri-entry</li> </ul> <p><b>Jib Options</b></p> <ul style="list-style-type: none"> <li>• Non-jib</li> <li>• 1.52 m (5 ft) articulating jib boom</li> </ul> <p><b>Engine Options</b></p> <ul style="list-style-type: none"> <li>• Deutz turbocharged diesel 74 hp (55 kW)</li> <li>• Perkins diesel 63 hp (47 kW)</li> </ul> <p><b>Drive Options</b></p> <ul style="list-style-type: none"> <li>• 2 x 4</li> <li>• 4 x 4</li> </ul> <p><b>Axle</b></p> <ul style="list-style-type: none"> <li>• Active oscillation</li> </ul> <p><b>Tyre Options</b></p> <ul style="list-style-type: none"> <li>• Rough terrain foam-filled (standard - water base)</li> <li>• Rough terrain non-marking foam-filled</li> </ul>	<p><b>Productivity Options</b></p> <ul style="list-style-type: none"> <li>• 340 kg capacity, S-80 only <sup>(2)</sup>, includes extra counterweight</li> <li>• Platform top auxiliary rail</li> <li>• Weld leads to platform <sup>(2)</sup></li> <li>• Air line to platform <sup>(2), (5)</sup></li> <li>• Power to platform (incl. plug, socket and ground fault interrupt leakage on request)</li> <li>• Work lights package (2 on chassis, 2 on platform)</li> <li>• Dual axis joystick steering</li> <li>• Hydraulic oil cooler</li> <li>• Biodegradable hydraulic oil <sup>(2)</sup></li> <li>• Hostile environment kit <sup>(2)</sup>; cylinder bellows, boom wiper seals, platform and ground control box cover</li> <li>• Deluxe hostile environment kit <sup>(2,3)</sup>; adds to basic kit ring gear guard, cable track hose cover and air pre-cleaner</li> <li>• Aircraft protection kit <sup>(1,3)</sup>; platform foam padding and padded disable system</li> <li>• Tilt cut-out option</li> <li>• Track &amp; Trace <sup>(4)</sup> (GPS unit providing machine location &amp; operating information)</li> <li>• Lockable platform &amp; ground control box covers</li> <li>• Tow package <sup>(2)</sup></li> <li>• Tool tray</li> <li>• Operator Protective Structure</li> <li>• Operator Protective Alarm</li> </ul> <p><b>Power Options</b></p> <ul style="list-style-type: none"> <li>• Engine gauge package <sup>(2)</sup>; oil pressure, temp &amp; amp</li> <li>• AC generator packages (110V/-220V/50Hz, 3000W) <sup>(2)</sup></li> <li>• Deutz v-belt generator kit (110V/220V) <sup>(3)</sup></li> <li>• Diesel air intake pre-cleaner <sup>(2)</sup></li> <li>• Diesel catalytic scrubber muffler</li> <li>• Low temperature cut-out module</li> <li>• Engine heater <sup>(2)</sup></li> <li>• Refinery kit with spark arrester and electric or mechanical Chalmers valve <sup>(1)</sup></li> </ul>



<sup>(1)</sup> Not available on tri-entry platforms

<sup>(2)</sup> Factory-fit option only

<sup>(3)</sup> Available on selected models only. See your Genie representative for further information.

<sup>(4)</sup> Includes a first 2 years subscription

<sup>(5)</sup> Air line to platform not compatible with Weld leads to platform

### United Kingdom

The Maltings, Wharf Road, Grantham NG31 6BH, T: +44 800 988 3739 (toll free), Fax +44 (0)1476 584334, Email AWP-InfoEurope@terex.com  
Visit [www.genielift.co.uk/locations](http://www.genielift.co.uk/locations) to view our global locations list.

### Worldwide Manufacturing And Distribution

Australia · Brazil · Caribbean · Central America · China · France · Germany · Italy · Japan · Korea · Mexico · Russia · Southeast Asia · Spain · Sweden · United Arab Emirates · United Kingdom · United States

Effective Date: February, 2014. Product specifications and prices are subject to change without notice or obligation. The photographs and/or drawings in this document are for illustrative purposes only. Refer to the appropriate Operator's Manual for instructions on the proper use of this equipment. Failure to follow the appropriate Operator's Manual when using our equipment or to otherwise act responsibly may result in serious injury or death. The only warranty applicable to our equipment is the standard written warranty applicable to the particular product and sale and we make no other warranty, express or implied. Products and services listed may be trademarks, service marks or trade names of Terex Corporation and/or their subsidiaries in the USA and many other countries. Genie is a registered trademark of Terex South Dakota, Inc. © 2014 Terex Corporation.

